

BCM 18

- 39 year old female
- Chest infection

- WCC- 6.06
- Plts-225
- Hb -13.83
- Retics –35.66

BCM 18

RCC - 4.67

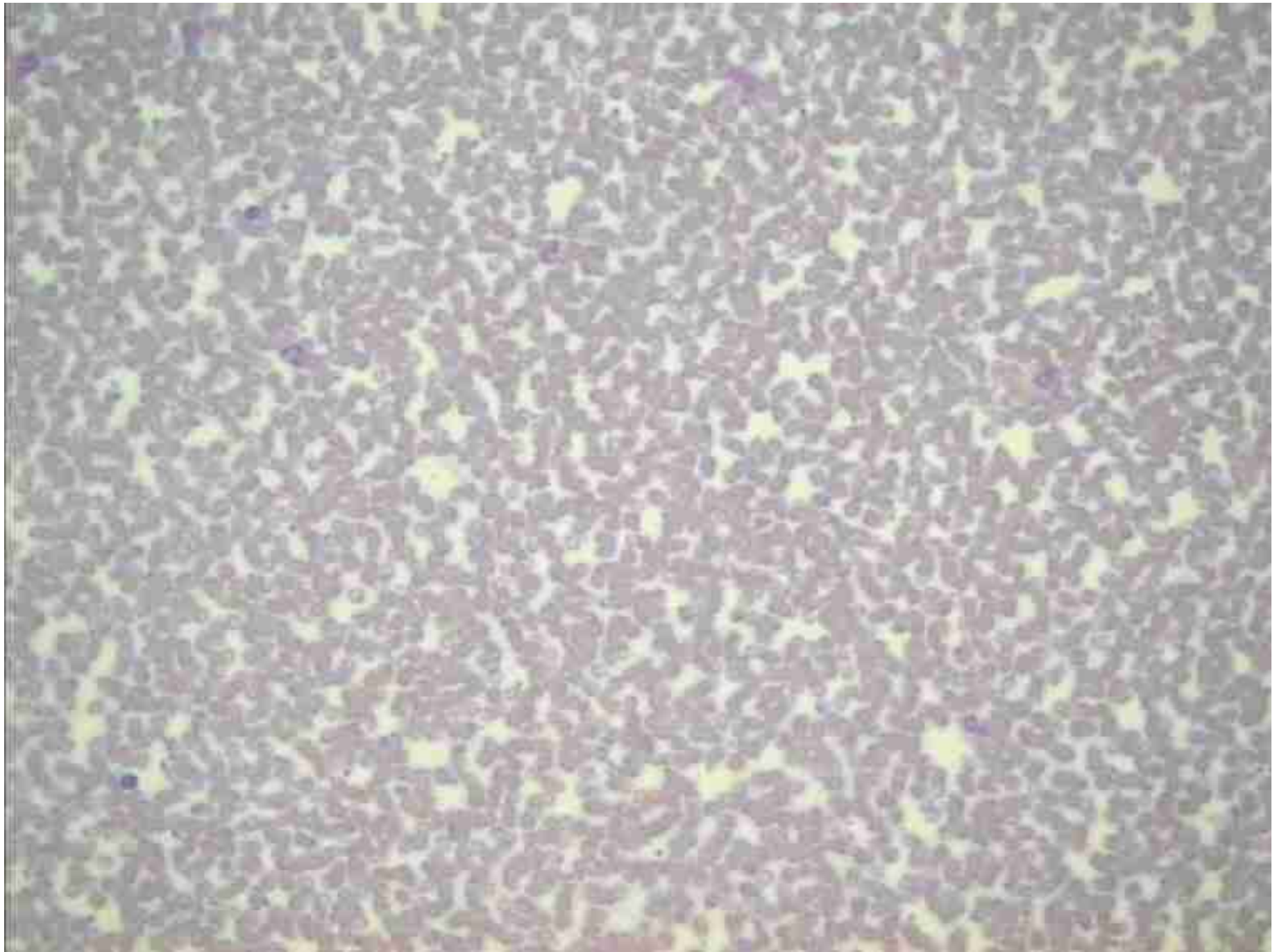
Hct - 0.416

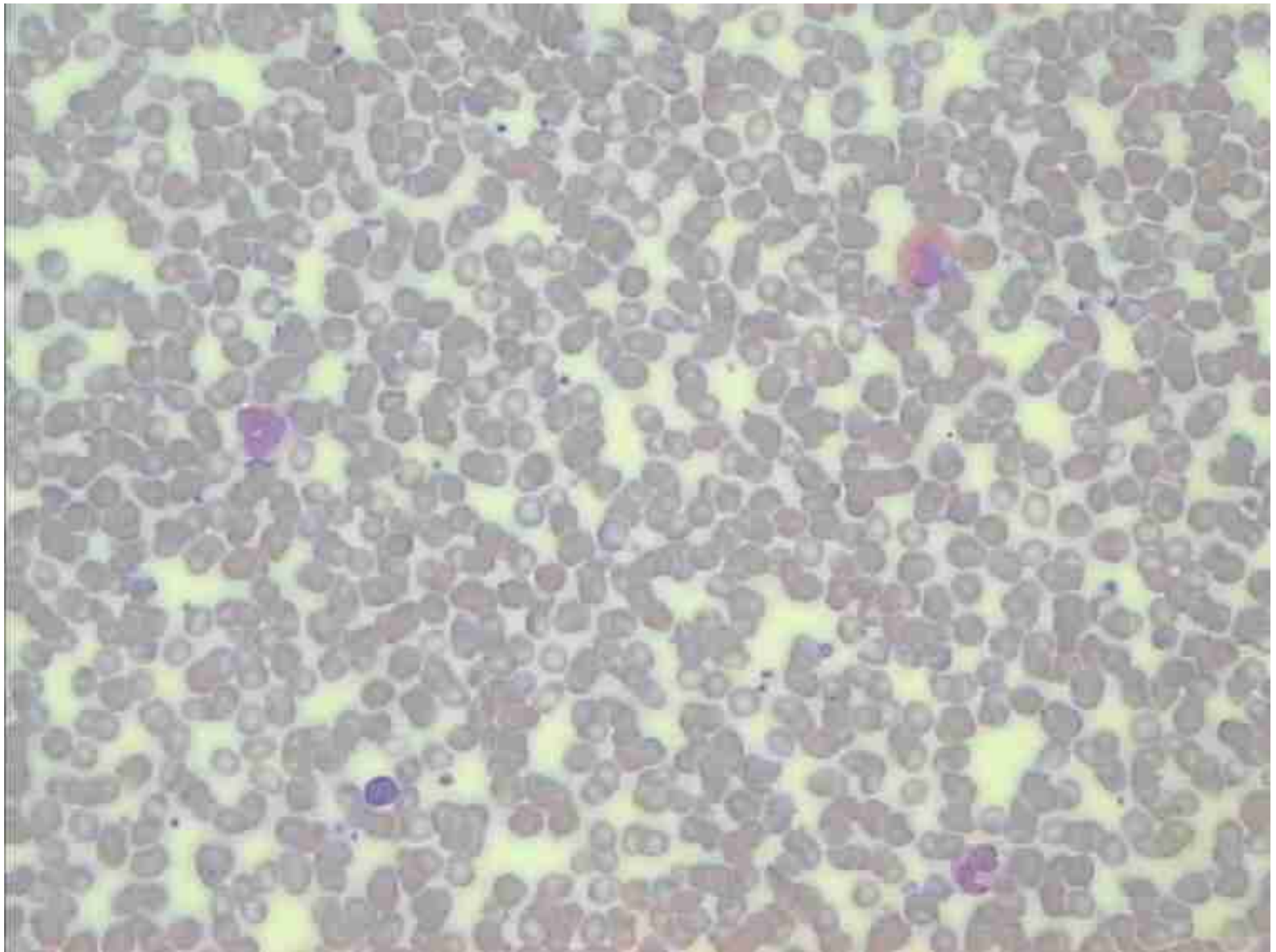
MCV - 89

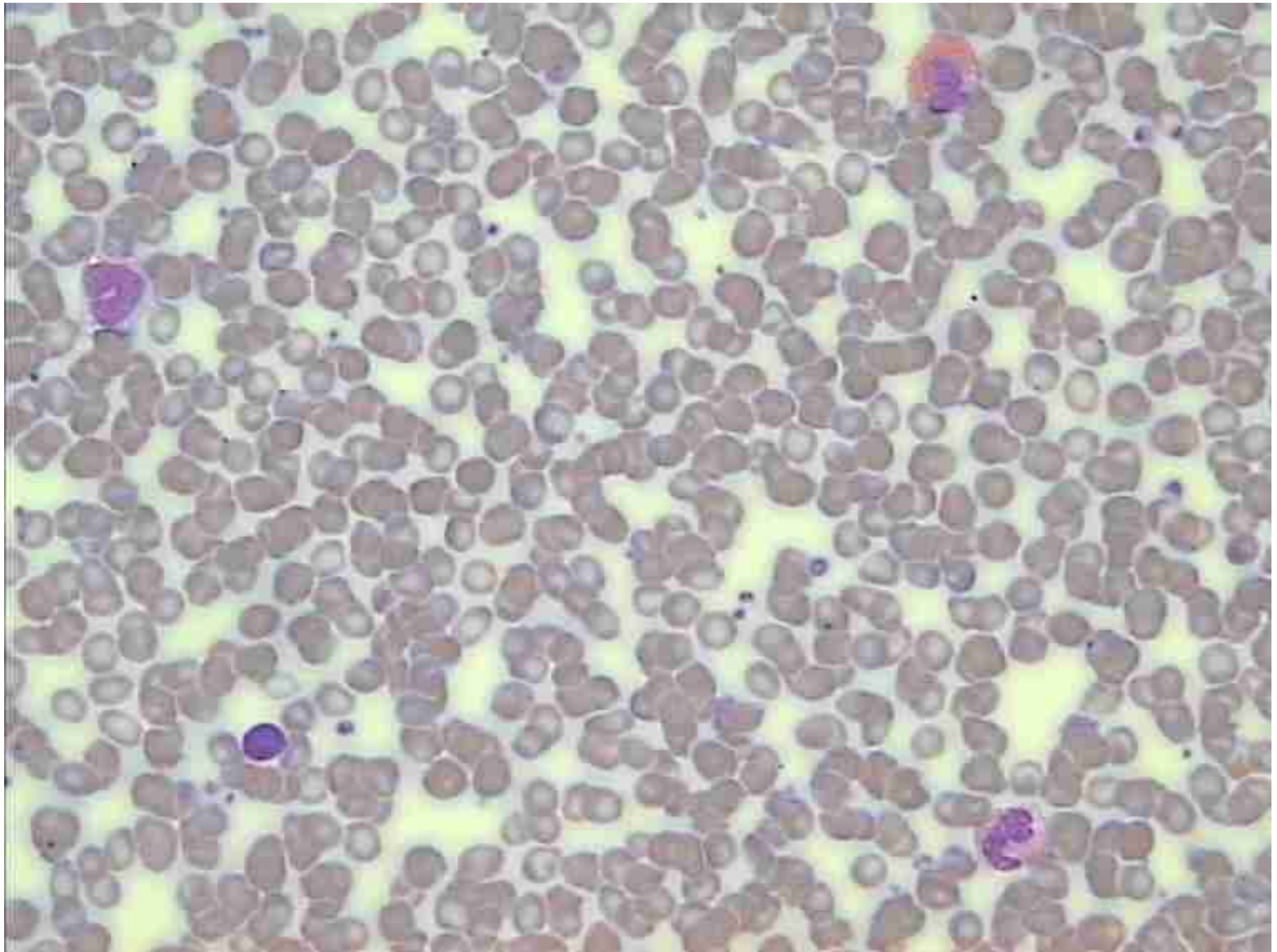
MCH -29.63

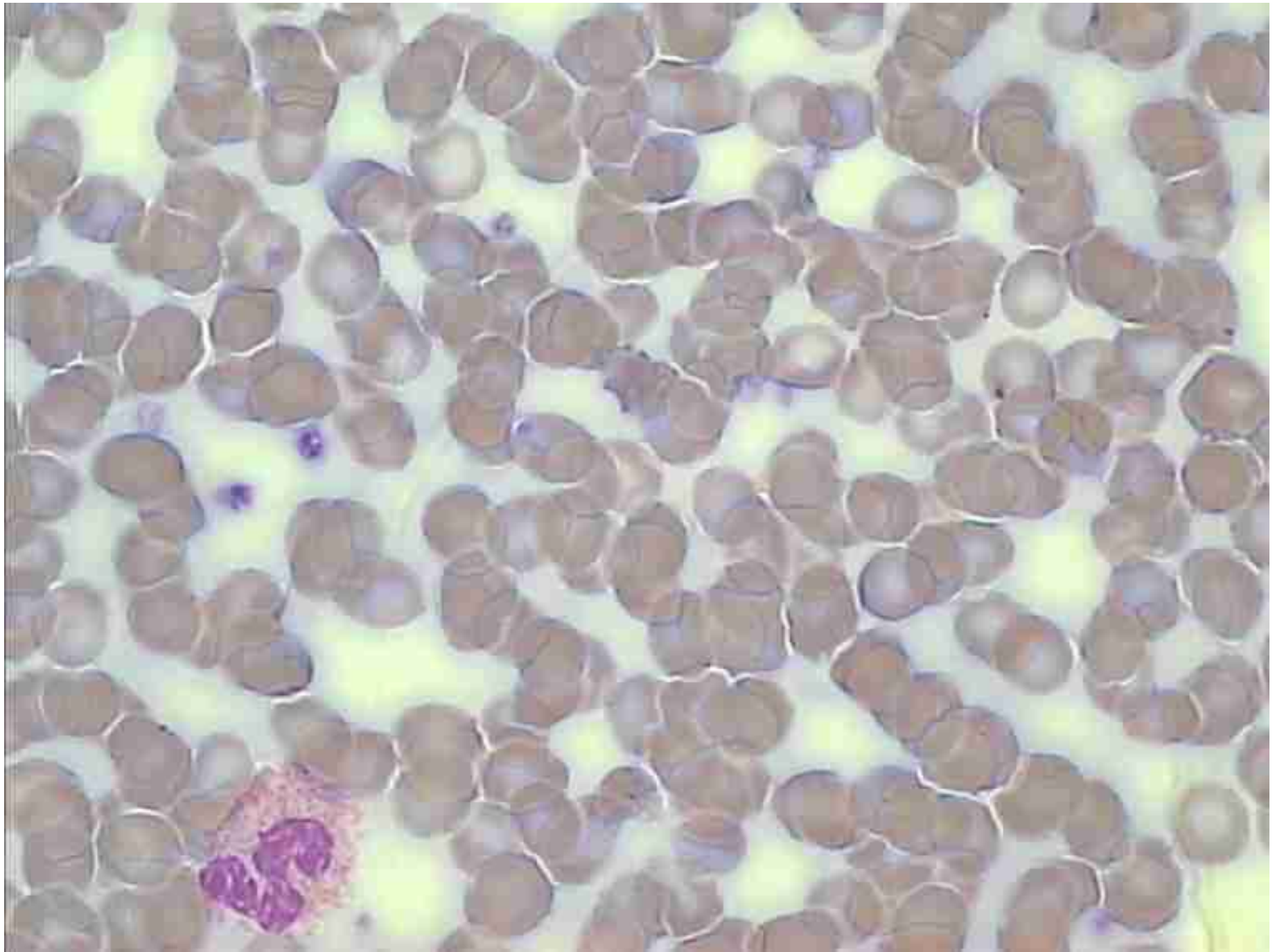
MCHC -33.24

RDW -12.5







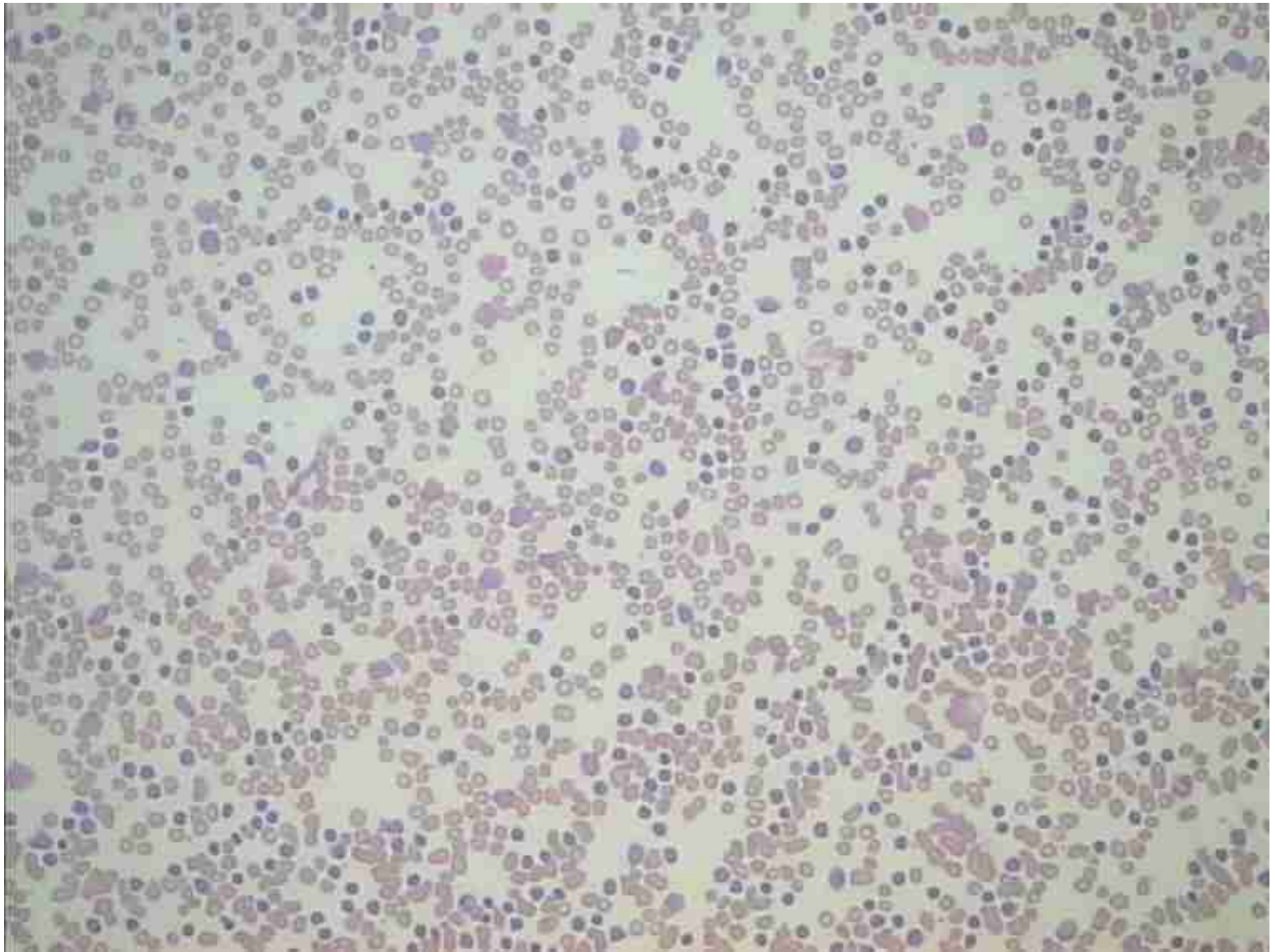


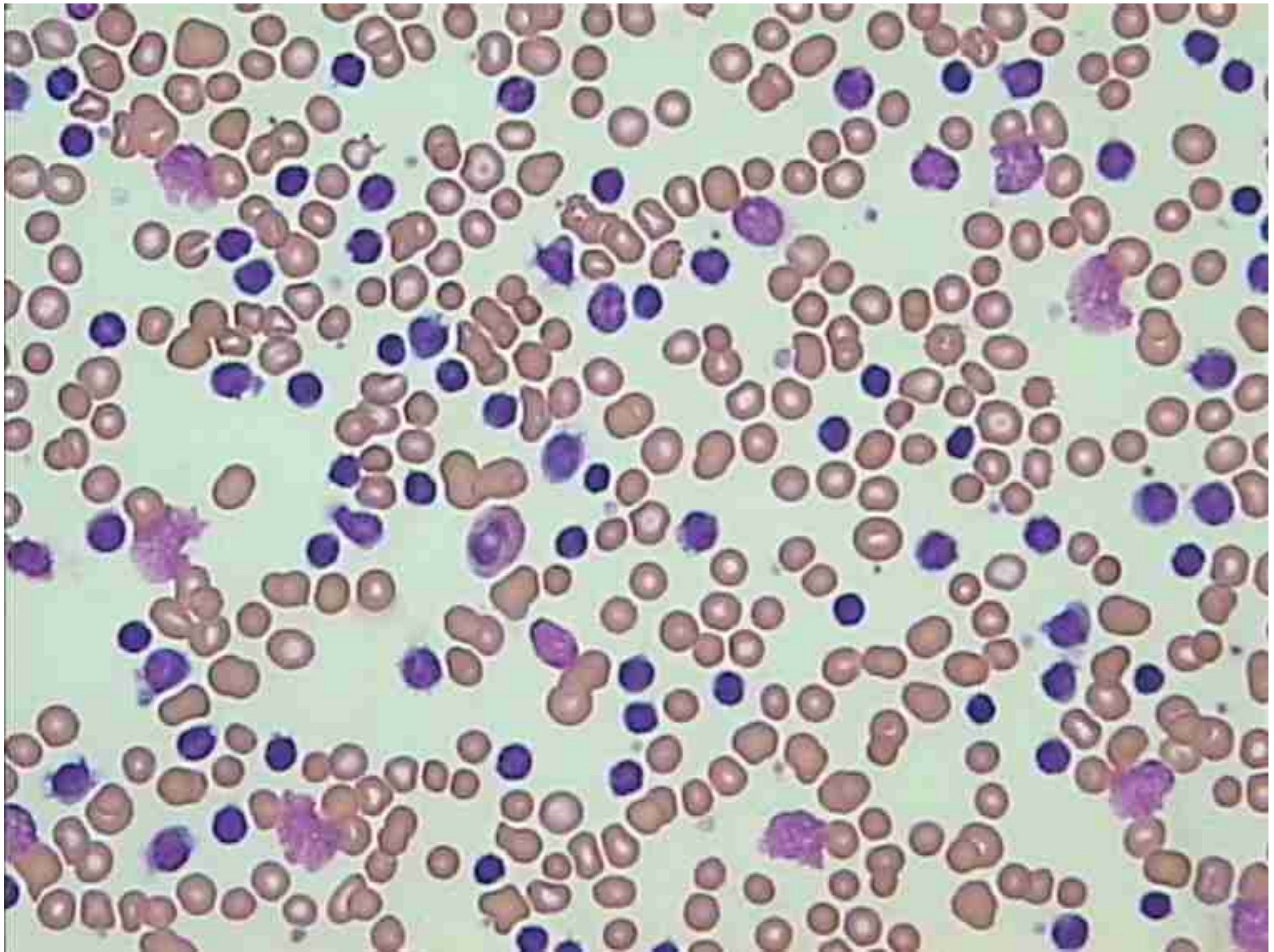
BCM 18

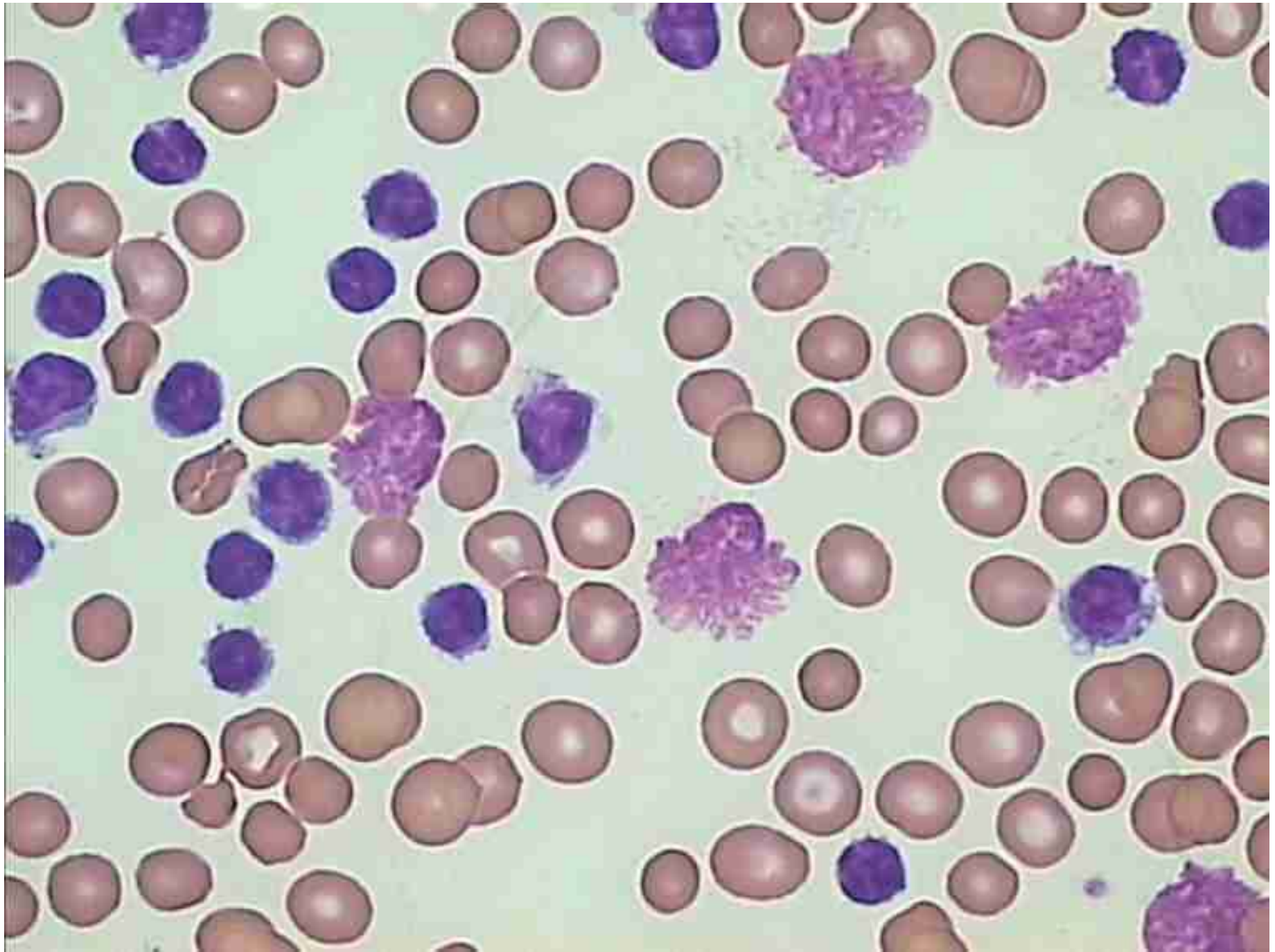
- Eosinophilia
- Left shift
- Reactive / plasmacytoid lymphocytes
- Poorly stained film
difficult to interpret

BCM 22

- 70 year old male
- Fatigue
- WCC-385
- Plts 200
- Hb- 7.5
 - RCC-3.4
 - Hct- 0.265
 - MCH-29
 - MCV- 85
 - MCHC- 31.9







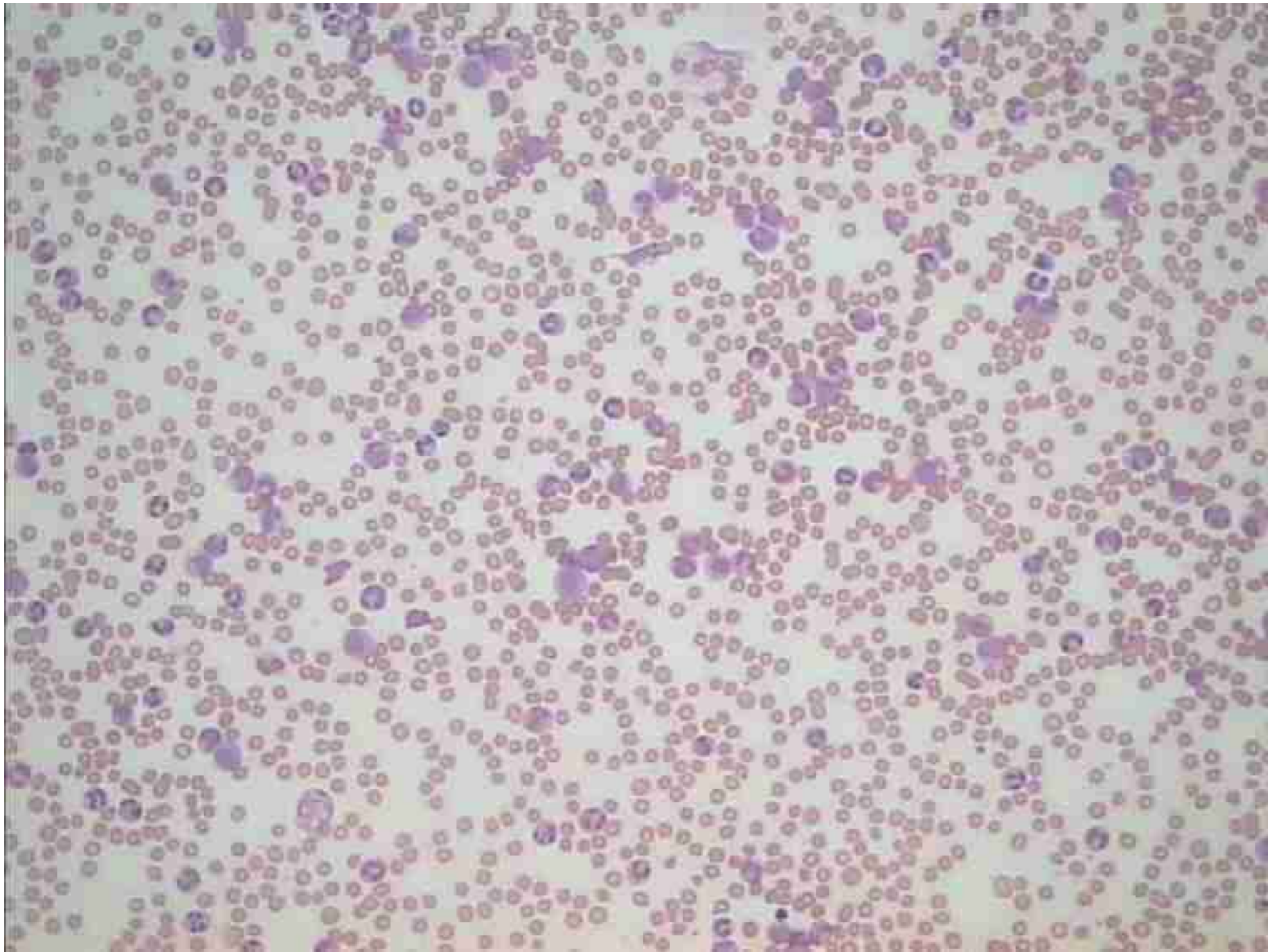
BCM 22

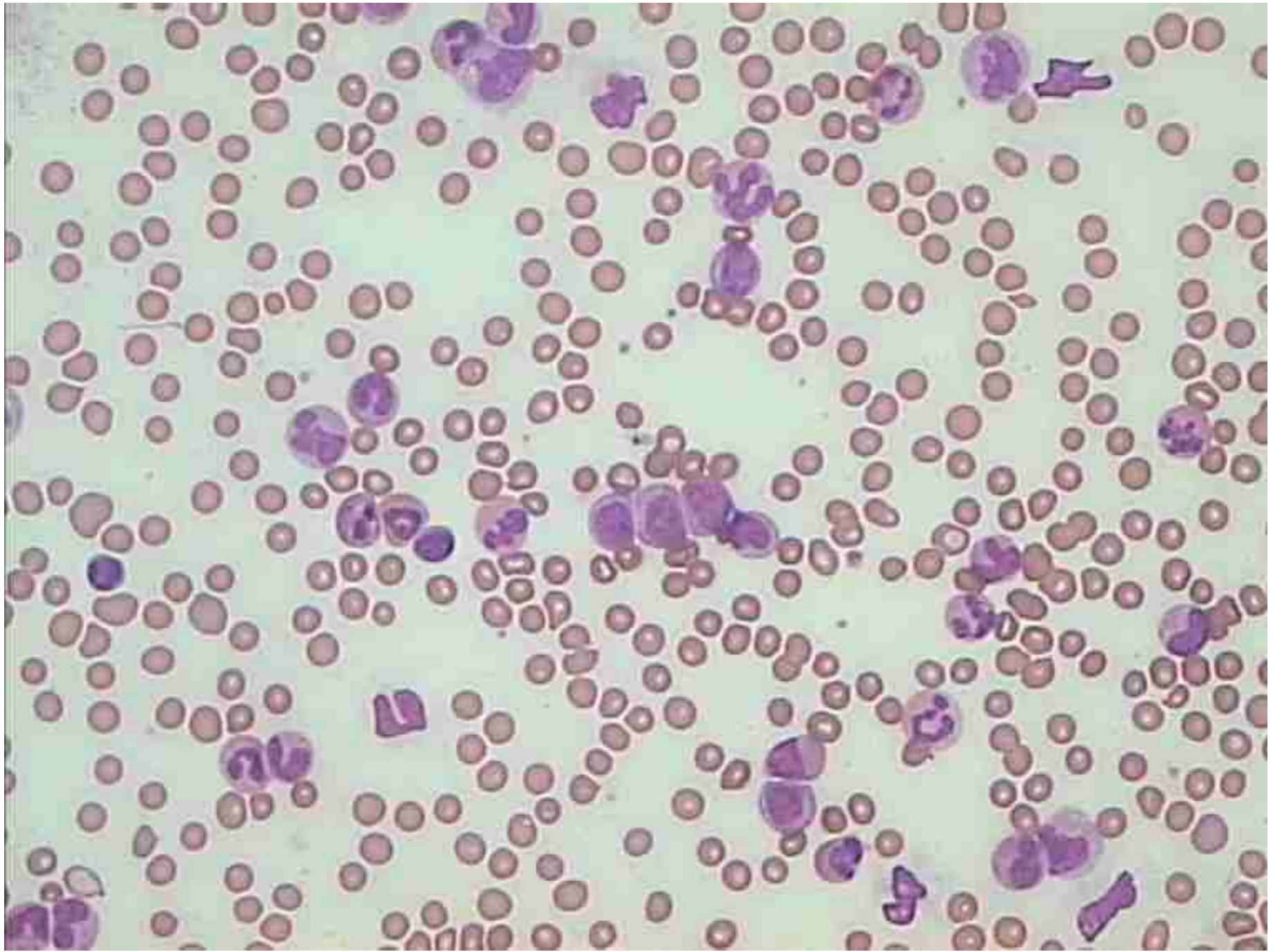
- B – CLL
- Autoimmune haemolytic anaemia

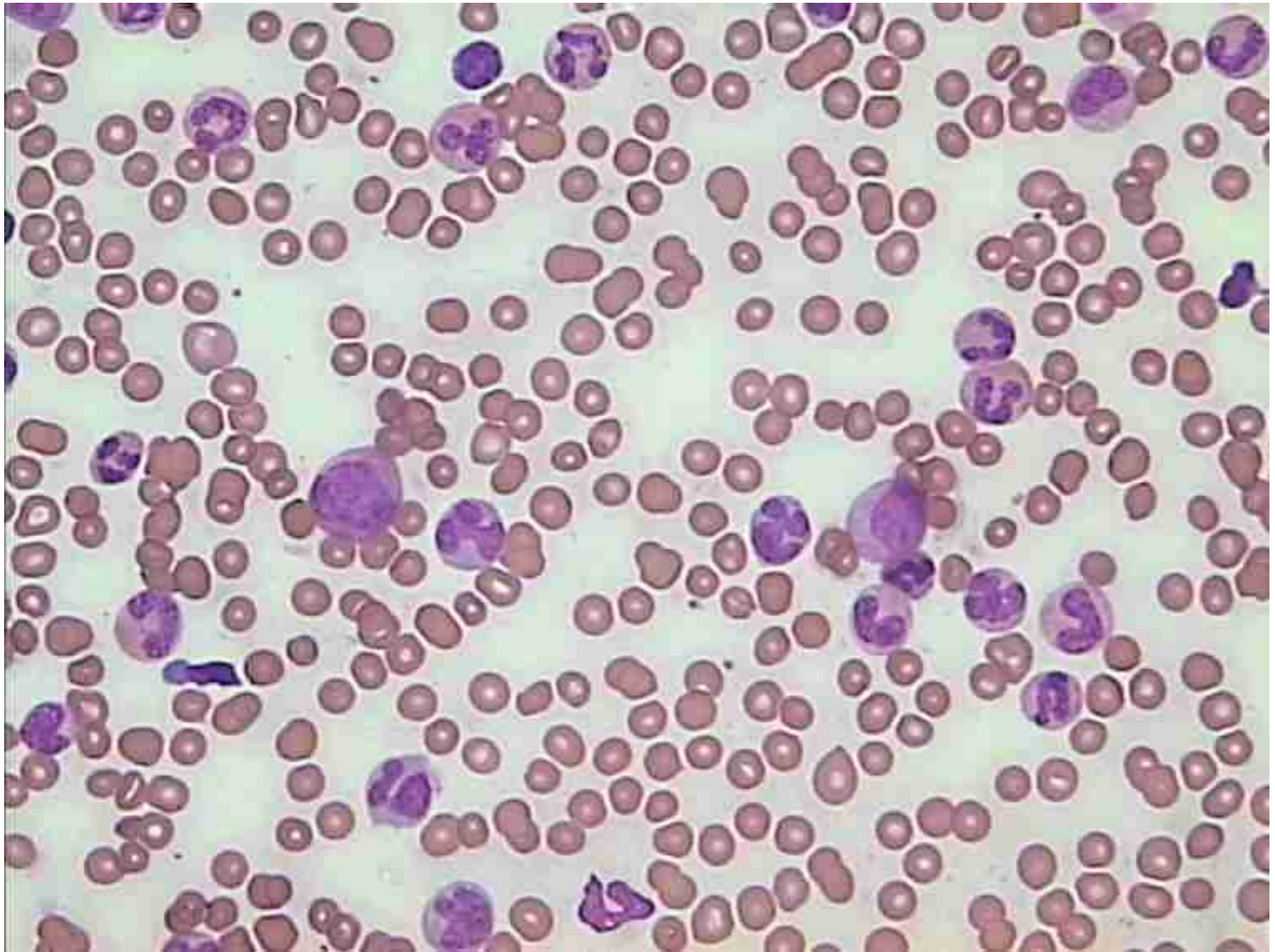
BCM 25

- 60 year old male
- TB
- Fever

- WCC-217
- Hb-8.2
- Plt-81









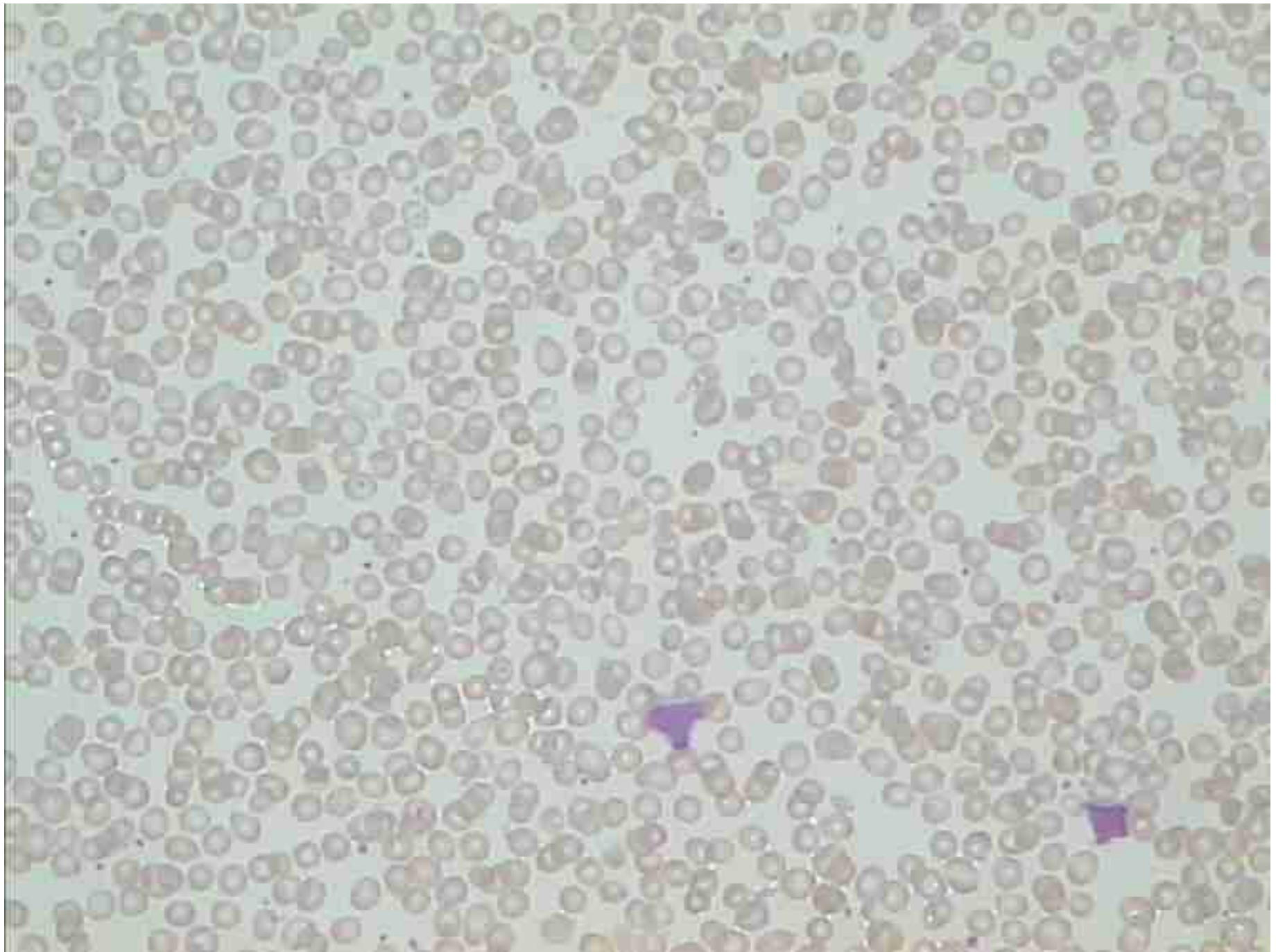
BCM 25

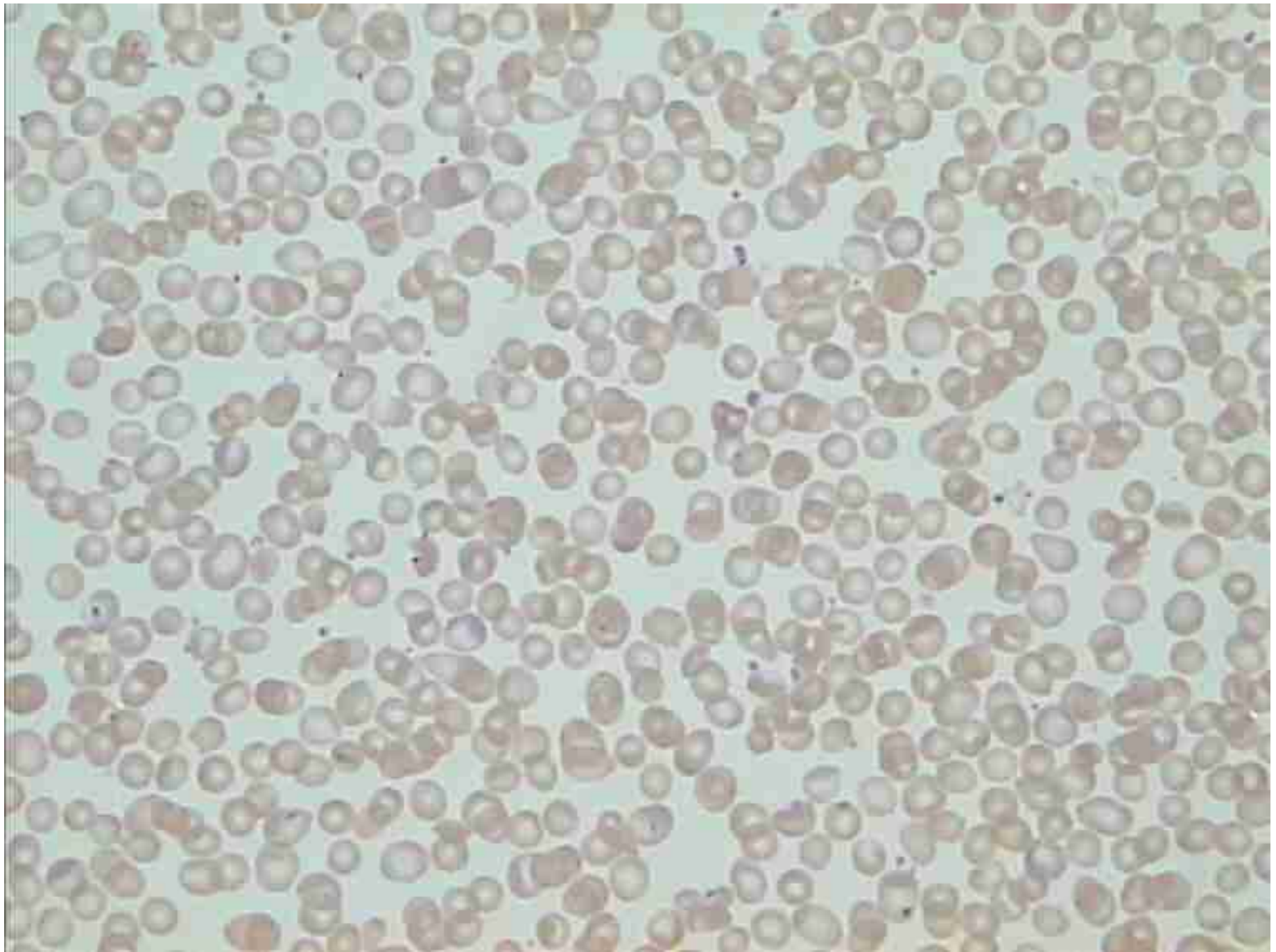
- Chronic myeloid leukaemia
- Chronic phase
- Atypical features
 - no basophilia
 - hypogranularity (incl myelocytes)
- Polychromasia and anisocytosis

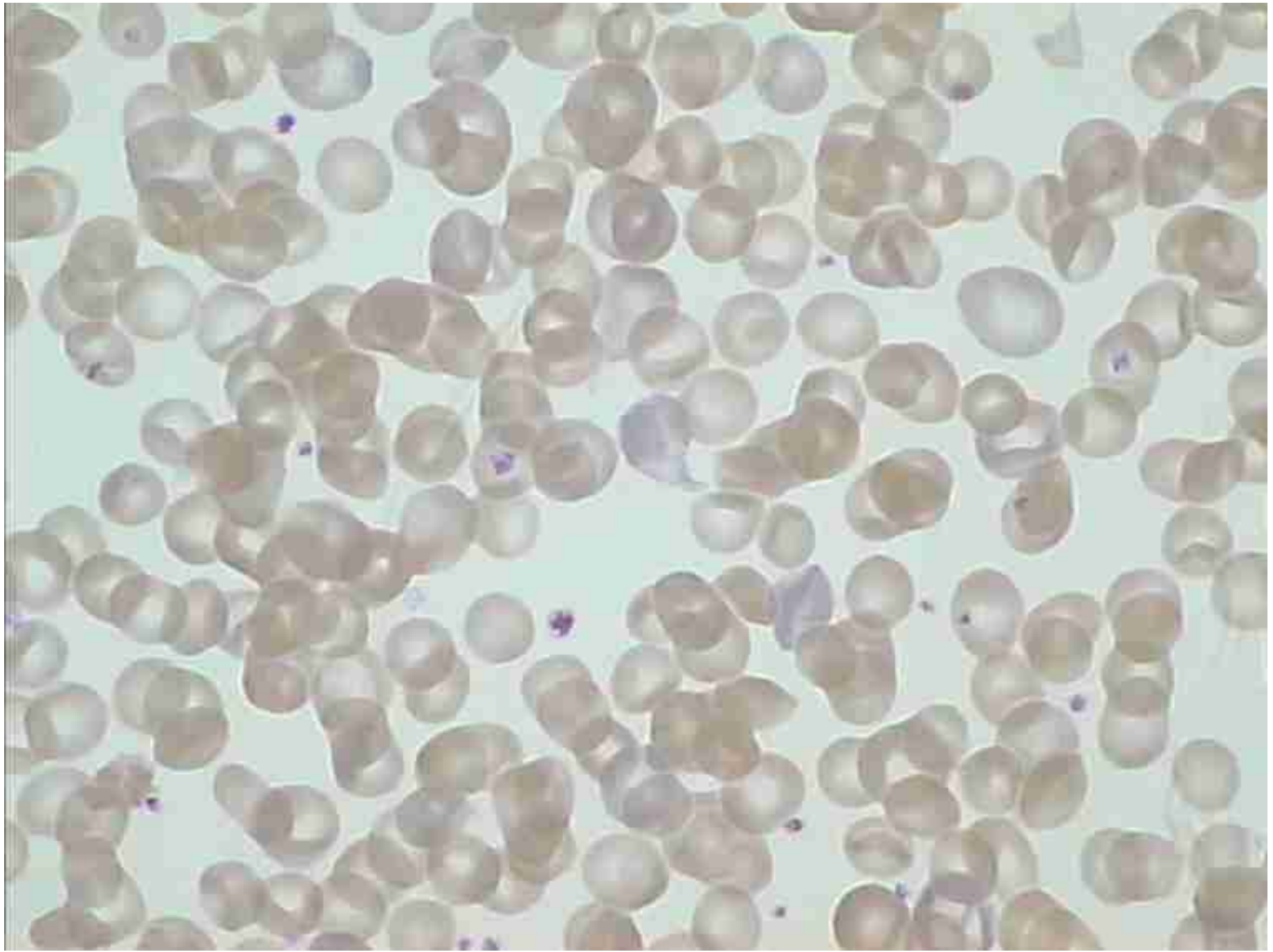
BCM 26

- 56 year old woman
- WCC – 4.5
- Hb –8.5
- Plt-300









BCM 26

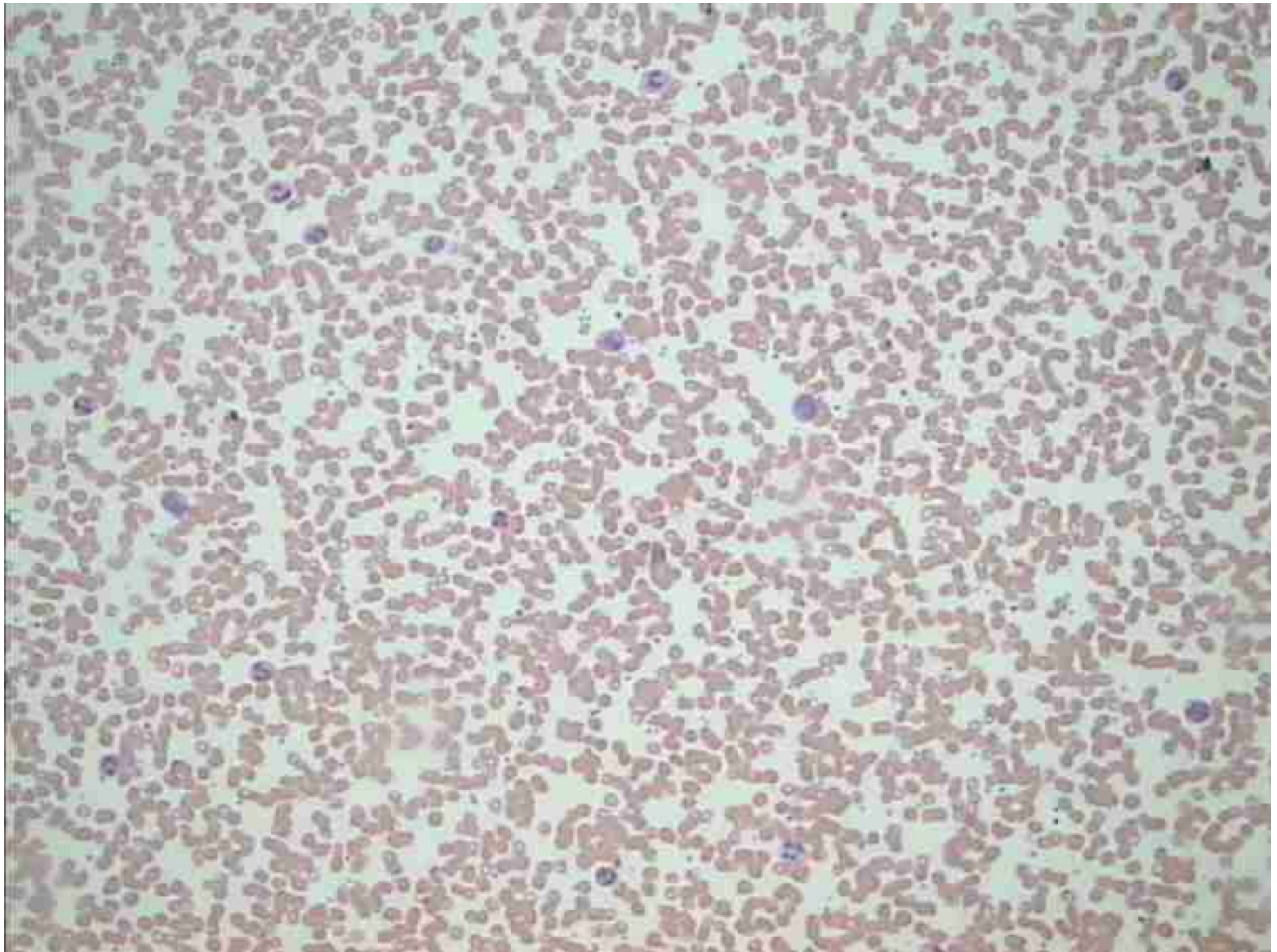
- Red cells
 - polychromasia
 - basophilic stippling/punctate basophilia
 - occasional spherocyte
 - occasional NRBC
- White cells
 - occasional atypical /reactive lymphocyte
- Platelets normal

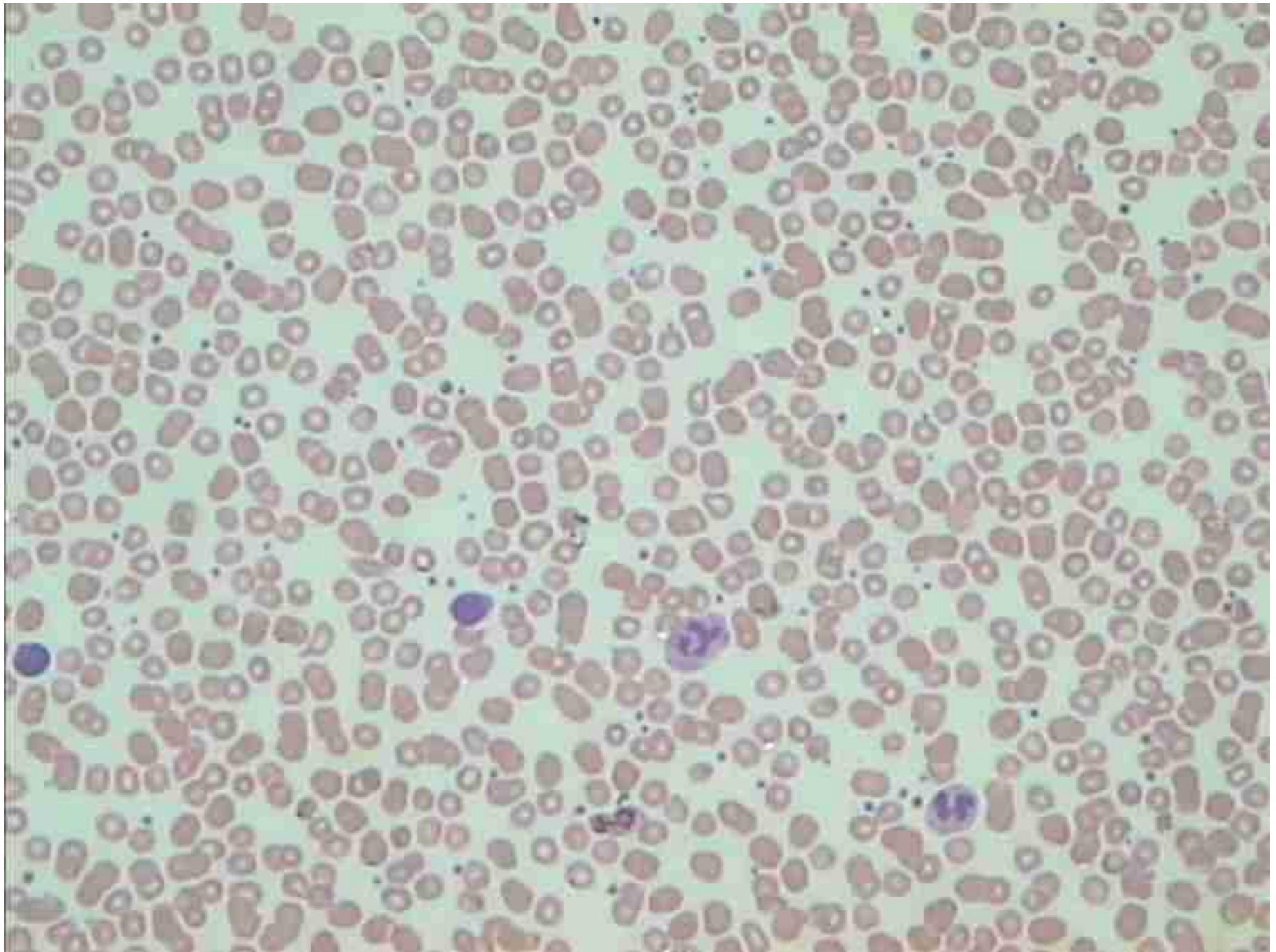
BCM 26

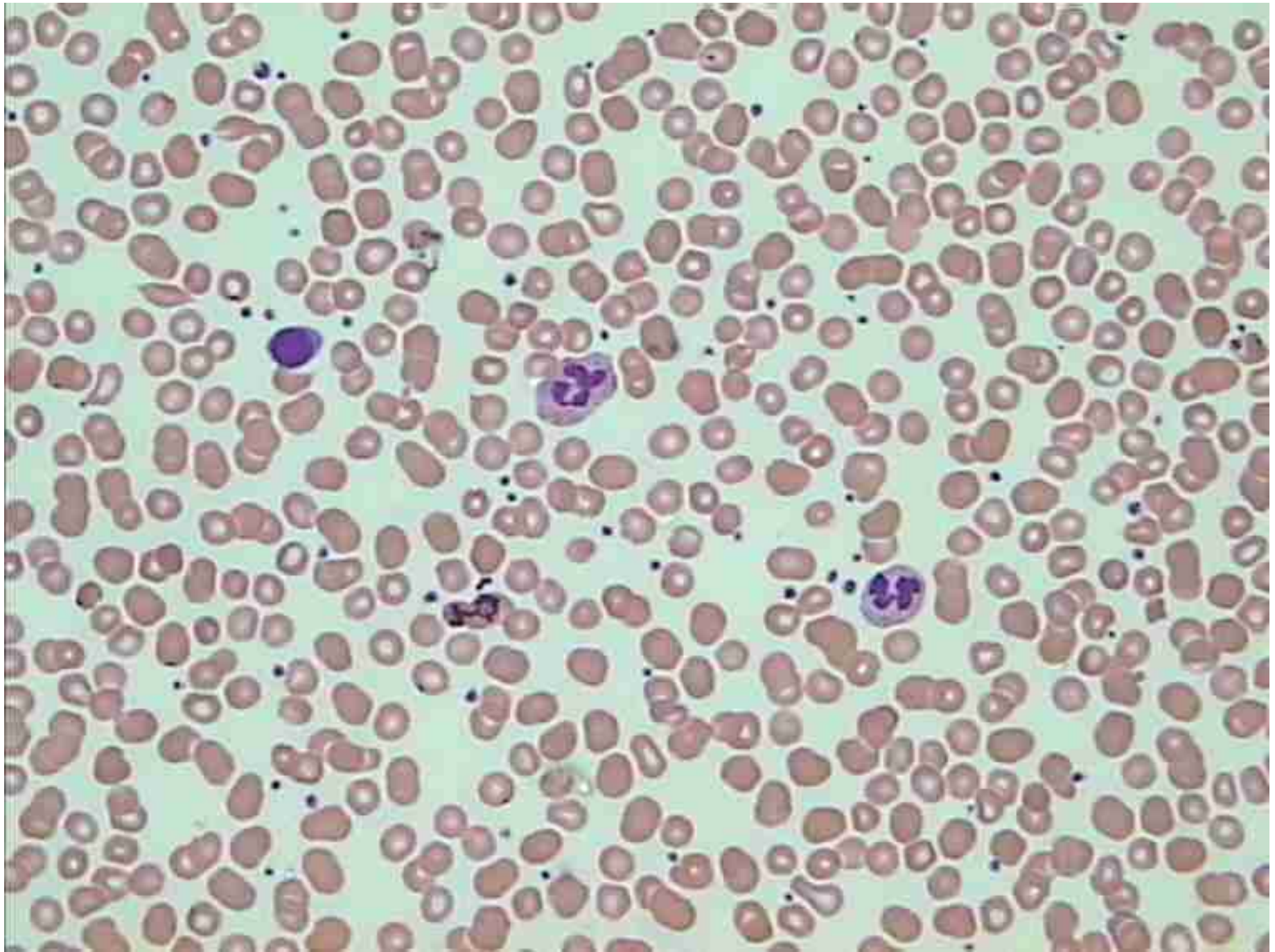
- Autoimmune haemolytic anaemia

BCM 28

- Female aged 32
- Backache
- WCC - 9.8
- Hb -13
- Platelets-303









BCM 28

- Healthy individual
- No underlying haematological disorder
- Films made / stained within 2 hrs of venepuncture
- Normal white cell differential
- Few variant/atypical lymphocytes