

**PATIENT PERCENTILE  
MONITORING**

**UNIQUE**

**HIGH VALUE**

**FREE!**

**(until 09/2015)**

**APPLY TODAY**

University of Ghent

Faculty of Pharmaceutical Sciences

Harelbekestraat 72

B-9000 Gent (Belgium)

[linda.thienpont@ugent.be](mailto:linda.thienpont@ugent.be)

**STT**  
Consulting

STT Consulting

Abraham Hansstraat 11

B-9667 Horebeke (Belgium)

[dietmar@stt-consulting.com](mailto:dietmar@stt-consulting.com)

**Benefits**

**Patient**

**Percentile**

- Compare your performance with your peer group/evidence-based target value **on patient data!**
- Valuable quality indicator for the examination phase (ISO 15189)
- Long-term stability monitoring
- Compare your stability with benchmark specifications

### Eligible participants

- All types of laboratories: mid- to large-size hospital laboratories
- Private laboratories
- Laboratory associations

### IT requirements

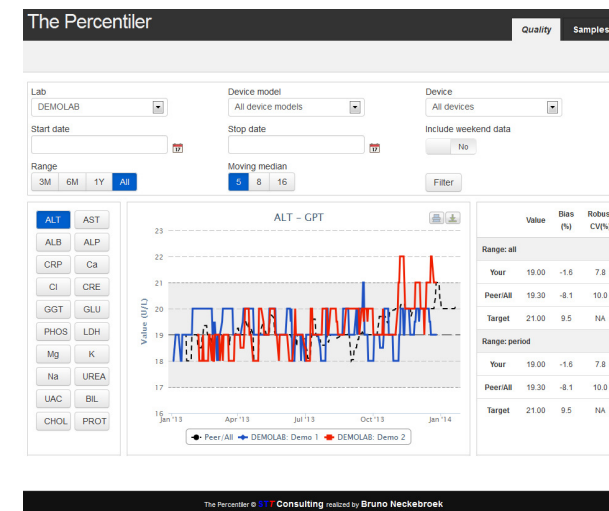
- Automatic calculation of daily patient median for 20 analytes
- Automatic data assembly and data transfer to "The Percentiler":  
[percentile@stt-consulting.com](mailto:percentile@stt-consulting.com)
- Data format: e-mail embedded table, EXCEL attachment, text attachment
- Exemplary solutions available for several LIS/Middleware systems

### Analytes covered

- Albumin
- Alkaline Phosphatase
- Alanine aminotransferase (ALT)
- Aspartate aminotransferase (AST)
- total-Bilirubin
- Calcium
- total-Cholesterol
- Chloride
- C-reactive protein (CRP)
- Gamma-glutamyltransferase(GGT)
- Glucose
- Potassium
- Creatinine
- Lactate dehydrogenase (LDH)
- Magnesium
- Inorganic phosphor (phosphate)
- Total-Protein
- Sodium
- Urea
- Uric acid (urate)

### User Interface

- [www.thepercentiler.be](http://www.thepercentiler.be)
- Demo Login: user = DEMOLAB, password = demo1234



### Reports

- Individual
- Regular, general reports

### Availability & Price

- Immediately available
- **FREE** until September 2015